

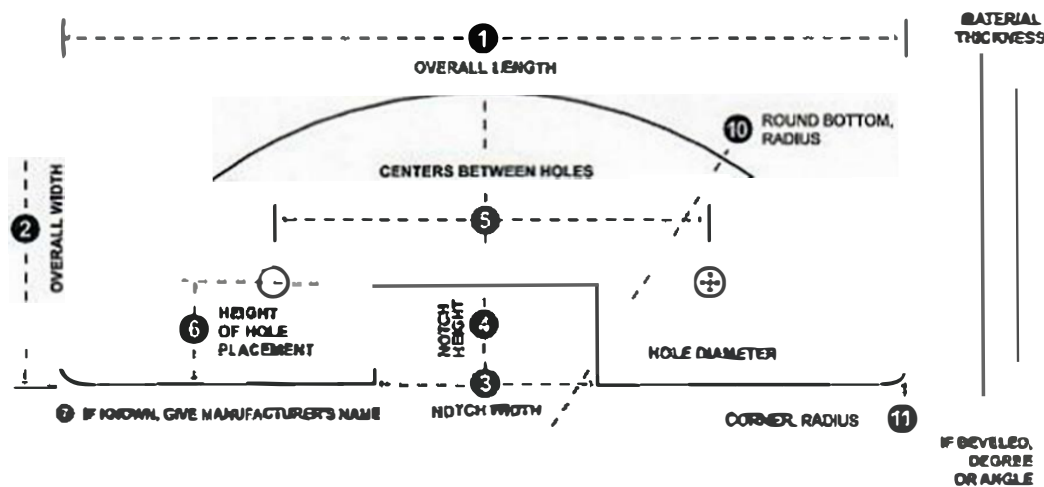
# CUSTOM DRAG FLIGHT QUOTE REQUEST



Complete for a Custom Quote  
Email to [sales@maljohn.com](mailto:sales@maljohn.com)

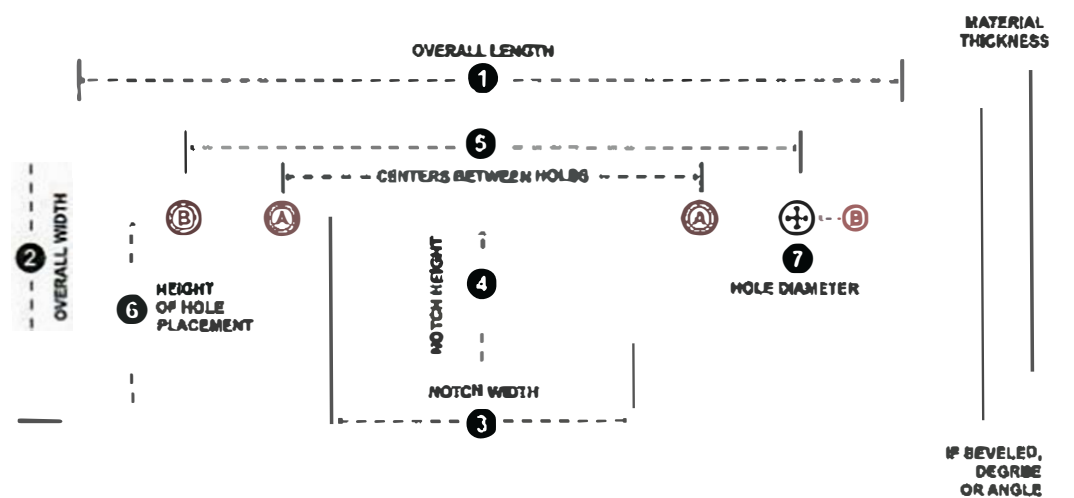
## ROUND BOTTOM FLIGHTS

Round bottom flights are standardized according to conveyor manufacturer. Most common sizes and styles are stocked for immediate shipment. Custom round bottom flights can be made and shipped quickly.



## FLAT BOTTOM (En-Masse) FLIGHTS

The Flat Bottom flight is the most customized flight design. It can vary in height, length and thickness.



## CUSTOM DRAG FLIGHT QUOTE REQUEST

Please fill in the following information and email to [sales@maljohn.com](mailto:sales@maljohn.com)

### USER INFORMATION (Primary Contact)

Name \_\_\_\_\_ Title \_\_\_\_\_  
 Company Name \_\_\_\_\_  
 Shipping Address \_\_\_\_\_  
 City \_\_\_\_\_ State/Province \_\_\_\_\_  
 Phone \_\_\_\_\_  
 Email Address \_\_\_\_\_  
 Website \_\_\_\_\_

6 Height of Hole Placement: \_\_\_\_\_  
 7 Hole Diameter: \_\_\_\_\_  
 8 Material Thickness: \_\_\_\_\_  
 9 If Beveled, Degree or Angle: \_\_\_\_\_  
 10 Round Bottom Radius: \_\_\_\_\_  
 12 Corner Radius: \_\_\_\_\_

### 11 Material Type: (Please Check One)

Virgin UHMW:  Nylon:  Reprocessed UHMW:

Other: \_\_\_\_\_

13 Manufacturer Name (if known): \_\_\_\_\_

14 Quantity Needed: \_\_\_\_\_

15 Customer Part #: \_\_\_\_\_

Additional Info: \_\_\_\_\_

### DRAG FLIGHT SPECIFICATIONS

ROUND BOTTOM  FLAT BOTTOM  (Please Check One)

1 Overall Length: \_\_\_\_\_ 2 Overall Width: \_\_\_\_\_

3 Notch Width: \_\_\_\_\_ 4 Notch Height: \_\_\_\_\_

5 Centers Between Holes - Round Bottom: \_\_\_\_\_

Centers Between Holes - En Masse: (A) \_\_\_\_\_ (B) \_\_\_\_\_

(A) \_\_\_\_\_ (B) \_\_\_\_\_

If available, please send along with this form, any DXF/DWG or PDF file of the drag flight requested.

CALL TODAY, TOLL FREE 1-800-268-1908 OR VISIT US ONLINE AT [www.maljohn.com](http://www.maljohn.com)